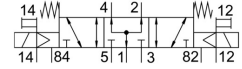
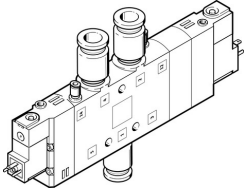


# Air solenoid valve CPE24-M3H-5/3BS-QS-12

Part number: 170354

FESTO



## Data sheet

| Feature                                | Value  |
|--|--|
| Valve function                         | 5/3, pressurized   |
| Actuation type                         | Electrical   |
| Width                                  | 24 mm  |
| Standard nominal flow rate             | 1600 l/min   |
| Pneumatic working port                 | QS-12  |
| Operating voltage                      | 230V AC  |
| Operating pressure                     | -0.09 MPa ... 1 MPa  |
| Operating pressure                     | -0.9 bar ... 10 bar  |
| Structural design                      | Piston gate valve  |
| Reset method                           | Mechanical spring  |
| Certification                          | c UL us - Recognized (OL)                                      |
| Maritime classification                | See certificate  |
| Degree of protection                   | IP65<br>With plug socket<br>as per IEC 60529                   |
| Nominal width                          | 11 mm  |
| Type code                              | CPE24  |
| Exhaust air function                   | With flow control option                                       |
| Sealing principle                      | Soft   |
| Mounting position                      | Any  |
| Manual override                        | Detenting via accessory<br>Non-detenting                       |
| Type of control                        | Pilot-controlled   |
| Pilot air supply port                  | External   |
| Flow direction                         | Reversible   |
| Symbol                                 | 00991031   |
| Valve position ID                      | Label holder   |
| Lap                                    | Overlap  |
| Pilot pressure MPa                     | 0.25 MPa ... 1 MPa   |
| Pilot pressure                         | 2.5 bar ... 10 bar   |
| Switching time off                     | 55 ms  |
| On switching time                      | 25 ms  |
| Duty cycle                             | 100%   |
| Max. positive test pulse with 0 signal | 3300 µs  |
| Max. negative test pulse on 1 signal   | 3100 µs  |
| Coil characteristics                   | 230 V AC: 50/60 Hz, initial power 3.0 VA, holding power 2.4 VA |

| Feature                                  | Value  |
|--|--|
| Permissible voltage fluctuations         | -15 % / +10 %  |
| Operating medium                         | Compressed air as per ISO 8573-1:2010 [7:4:4]  |
| Information on operating and pilot media | Operation with oil lubrication possible (required for further use)                   |
| Vibration resistance                     | Transport application test with severity level 2 as per FN 942017-4 and EN 60068-2-6 |
| Shock resistance                         | Shock test with severity level 2 as per FN 942017-5 and EN 60068-2-27                |
| Corrosion resistance class (CRC)         | 2 - Moderate corrosion stress  |
| Temperature of medium                    | -5 °C ... 50 °C  |
| Pilot medium                             | Compressed air as per ISO 8573-1:2010 [7:4:4]  |
| Ambient temperature                      | -5 °C ... 50 °C  |
| Electrical connection                    | Form C   |
| Type of mounting                         | With through-hole  |
| Pilot exhaust air port 82                | M5   |
| Pilot exhaust air port 84                | M5   |
| Pilot air port 12                        | M5   |
| Pilot air port 14                        | M5   |
| Pneumatic connection 1                   | QS-12  |
| Pneumatic connection 2                   | QS-12  |
| Pneumatic connection 3                   | G3/8   |
| Pneumatic connection 4                   | QS-12  |
| Pneumatic connection 5                   | G3/8   |
| Note on materials                        | RoHS-compliant   |
| Seals material                           | NBR  |
| Housing material                         | Die-cast aluminum  |